



# The St. Phillips

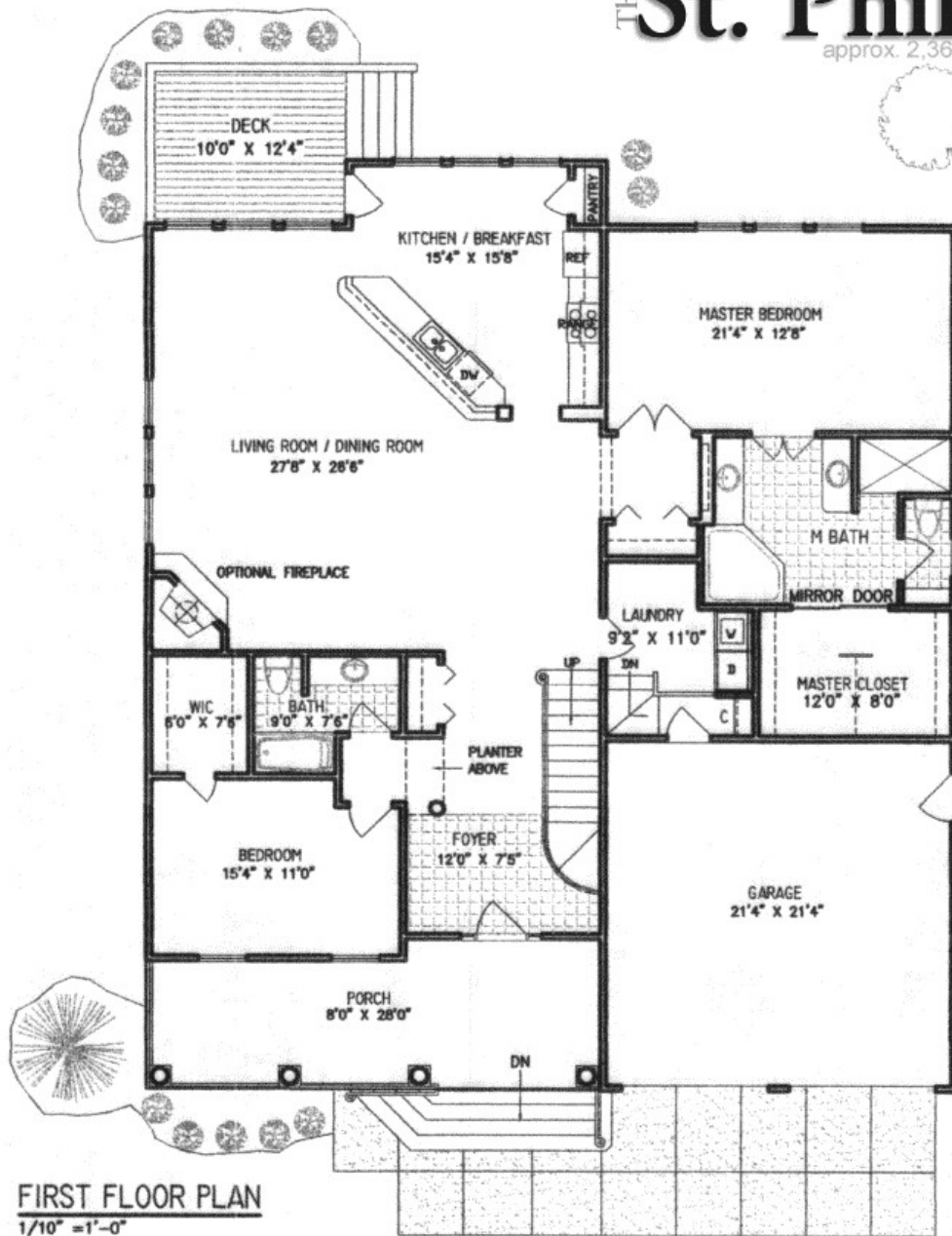
approx. 2,366 sq.ft



**SECOND FLOOR PLAN**  
1/10" = 1'-0"

# The St. Phillips

approx. 2,366 sq.ft



**FIRST FLOOR PLAN**  
1/10" = 1'-0"

SQUARE FOOTAGE	
HEATED FIRST FLOOR	2,062
HEATED SECOND FLOOR	304
HEATED TOTAL FLOOR	2,366
GARAGE	490
TOTAL	2,856

**\*Notes:**

ALL Skylights, Fireplaces, Bay Windows, & Front Doors are  
Optional Upgrades